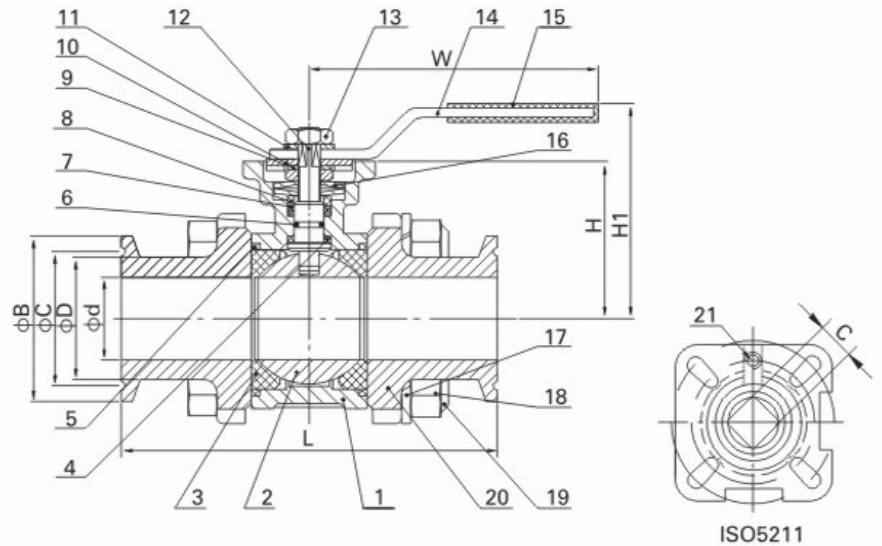


3-PC CLAMP BALL VALVE

三片式卡箍球阀



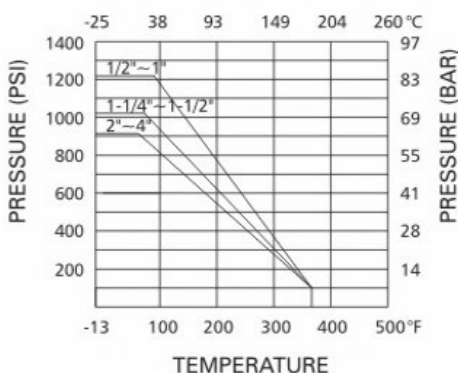
MV-83HC(33C)

- 驱动盘标准: ISO5211
- 卡箍端标准: ASME BPE-2022
- 公称压力: 1000PSI (PN63)
- 工作温度: -25°C ~ +180°C
- 材料: CF8M, CF8, CF3M
- Mounting pad: ISO 5211
- Clamp ends: ASME BPE-2022
- Pressure rating: 1000PSI (PN63)
- Working temperature: -25°C ~ +180°C
- Material: CF8M, CF8, CF3M

MATERIAL LIST

ITEM	PART	MATERIAL	QTY.
1	Body	CF8M	1
2	Ball	SS316	1
3	Ball Seat	R-PTFE (15%)	2
4	Thrust Washer	PTFE	1
5	Body Gasket	PTFE	2
6	O-ring	VITON	1
7	Stem Packing	PTFE	1
8	Gland	SS304	1
9	Tab Washer	SS304	1
10	Stopper	SS304	1
11	Spring Washer	SS304	1
12	Stem	SS316	1
13	Nut	SS304	2
14	Handle	SS304	1
15	Handle Cover	PLASTIC	1
16	Belleville Washer	SS301	2
17	Spring Washer	SS304	4(12)
18	Nut	SS304	4(12)
19	Bolt	SS304	4(6)
20	Cap	CF8M	2
21	Stop Pin	SS304	1

PRESSURE-TEMPERATURE RATING



DIMENSION LIST

SIZE	φd	L	φB	φC	φD	H	H1	C	W	ISO5211
DN15	89	9.4	25.1	20.0	12.7	43	70	9	117	F03-F04
DN20	98	15.8	25.1	20.0	19.1	50	78	11	134	F04/F05
DN25	108	22.1	50.5	43.5	25.4	58	87	11	134	F04/F05
DN32	117	28.5	50.5	43.5	31.8	64	98	14	203	F05/F07
DN40	127	34.8	50.5	43.5	38.1	69.5	104	14	203	F05/F07
DN50	152	47.5	64	56.5	50.8	78	112	14	203	F05/F07
DN65	178	60.2	91	83.5	63.5	100	140	17	255	F07/F10
DN80	190	72.9	106	97	76.2	112.5	153	17	255	F07/F10
DN100	229	97.4	119	110	101.6	125.5	166	17	302	F07/F10