

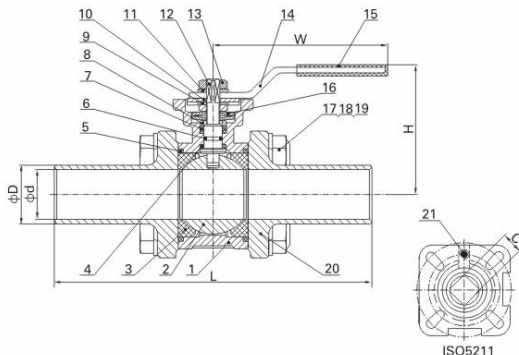
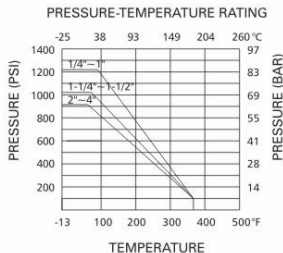
3-PC LONG BUTT-WELD BALL VALVE

三片式加长对焊球阀



MV-83HL(33L)

- 驱动盘标准: ISO 5211
- 焊接端标准: DIN EN12627
- 公称压力: 1000PSI (PN63)
- 工作温度: -25°C ~ +180°C
- 材 料: CF8M, CF8, CF3M
- Full bore
- Mounting pad: ISO 5211
- Welding ends: DIN EN12627
- Pressure rating: 1000PSI (PN63)
- Working temperature: -25°C ~ +180°C
- Material: CF8M, CF8, CF3M



MATERIAL LIST

ITEM	PART	MATERIAL	QTY.
1	Body	CF8M	1
2	Ball	SS316	1
3	Ball Seat	R-PTFE (15%)	2
4	Thrust Washer	PTFE	1
5	Body Gasket	PTFE	2
6	O-ring	VITON	1
7	Stem Packing	PTFE	1
8	Gland	SS304	1
9	Tab Washer	SS304	1
10	Stopper	SS304	1
11	Spring Washer	SS304	1
12	Stem	SS316	1
13	Nut	SS304	2
14	Handle	SS304	1
15	Handle Cover	PLASTIC	1
16	Belleville Washer	SS301	2
17	Spring Washer	SS304	4(12)
18	Nut	SS304	4(12)
19	Bolt	SS304	4(6)
20	Cap	CF8M	2
21	Stop Pin	SS304	1

DIMENSION LIST

SIZE	d	D	H	W	L	C	ISO5211	N.m
DN15	15	23.5	70	117	180	9	F03-F04	5
DN20	20	29.0	87	134	180	11	F04/F05	8
DN25	25	35.7	87	134	180	11	F04/F05	10
DN32	32	45.0	98	203	200	14	F05/F07	14
DN40	38	51.0	104	203	200	14	F05/F07	18
DN50	49	62.0	112	203	210	14	F05/F07	25
DN65	65	78.0	140	255	240	17	F07/F10	48
DN80	80	91.0	153	255	280	17	F07/F10	75
DN100	100	116.3	166	302	280	17	F07/F10	110