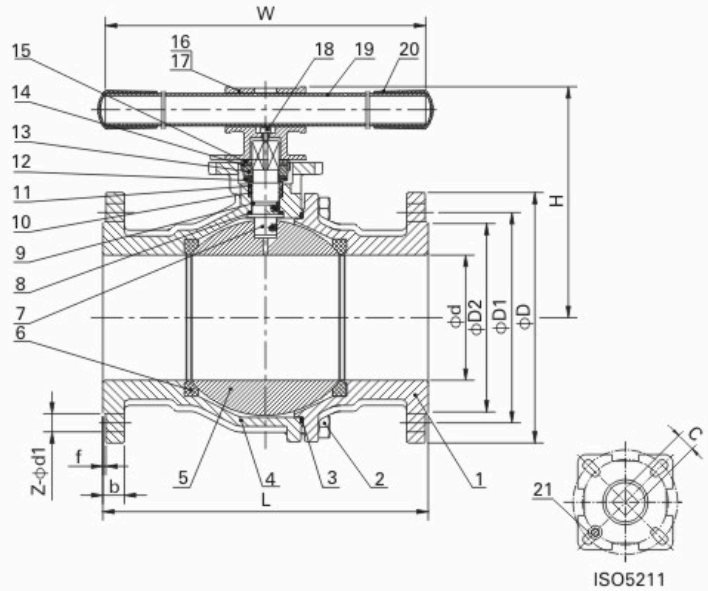


2-PC FLANGE BALL VALVE

二片式德标法兰球阀



ISO5211

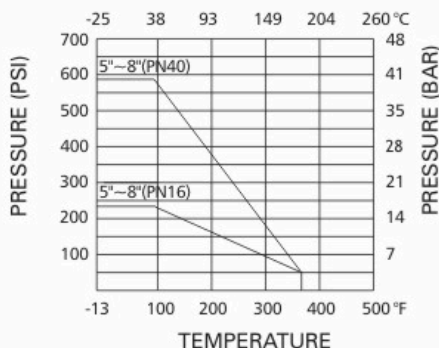
MV-24D (DN125~DN200)

- 防火设计
 - 法兰标准: DIN EN1092-1 PN10~PN40
 - 结构长度: EN558 Series27
DIN3202 F5
 - 驱动盘标准: ISO5211
 - 公称压力: PN16~PN40
 - 工作温度: -25°C~+180°C
 - 材 料: CF8M, CF8, CF3M, WCB
-
- Investment casting for body and cap
 - Fire-safe design
 - Flanged ends: DIN EN1092-1 PN10~PN40
 - Face to Face: EN558 Series27
DIN3202 F5
 - Mounting Pad: ISO5211
 - Pressure rating: PN16~PN40
 - Working temperature: -25°C~+ 180°C
 - Material: CF8M, CF8, CF3M, WCB

MATERIAL LIST

ITEM	PART	MATERIAL	QTY.
1	Cap	CF8M	1
2	Bolt	SS304	8
3	Body Gasket	PTFE	1
4	Body	CF8M	1
5	Ball	SS316	1
6	Ball Seat	R-PTFE (15%)	2
7	Stem	SS316	1
8	Thrust Washer	PTFE	1
9	O- Ring	VITON	1
10	Stem Packing	PTFE	1
11	Stem Ring	SS316	1
12	Belleville Washer	SS301	2
13	Nut	SS304	1
14	Nut Stopper	SS304	1
15	Plate Washer	SS304	1
16	Jack Screw	SS304	1
17	Handle Head	CF8	1
18	Handle Bolt	SS304	1
19	Handle	SS304	1
20	Plastic Cover	PLASTIC	2
21	Stop Pin	SS304	1

PRESSURE-TEMPERATURE RATING



DIMENSION LIST

SIZE	PN	d	L	D	D1	D2	b	f	H	W	C	ISO5211	Z-φd1	N·m
DN125	10/16	125	325	250	210	188	22	3	260	600	22	F10/F12	8-φ18	200
	25/40			270	220	26	278	600	22	F10/F12	8-φ26			
DN150	10/16	150	350	285	240	212	22	3	278	600	22	F10/F12	8-φ22	300
	25/40			300	250	218	28	340	800	27	F12/F14	12-φ22		
DN200	16	200	400	340	295	268	24	3	340	800	27	F12/F14	12-φ30	400
	40			375	320	285	34	12-φ22						